

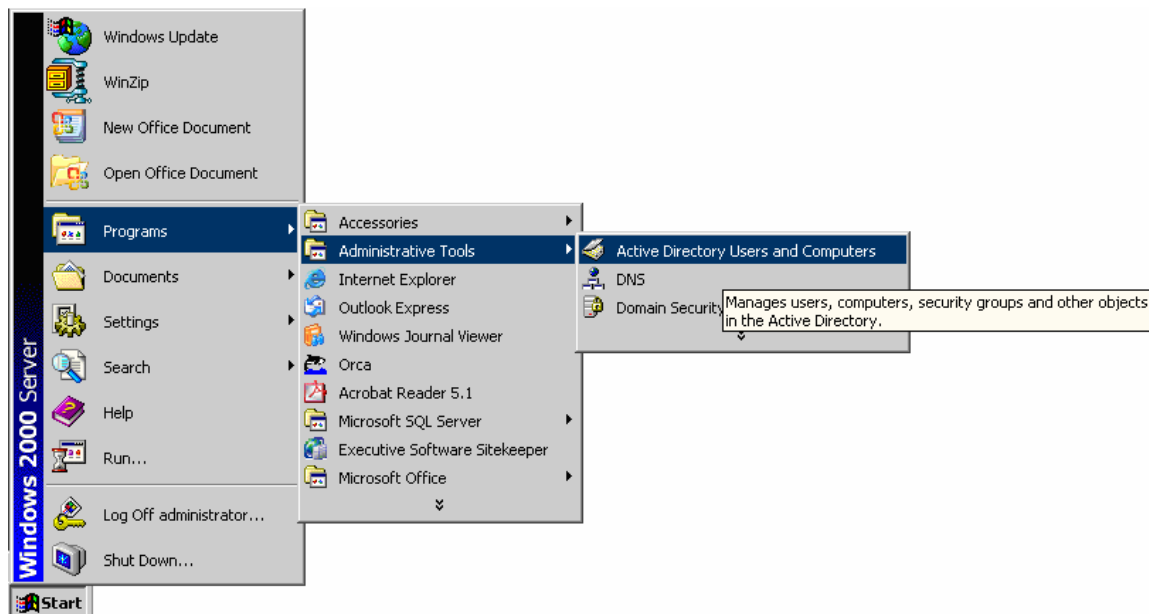
# Using Microsoft® Active Directory®<sup>1</sup> Group Policy<sup>2</sup> with Diskeeper®

Diskeeper can be administered network-wide via several different methods. The primary network administration tool for Diskeeper is Diskeeper Administrator Edition, a single point of control for all your Diskeeper administration needs. However, sites using Microsoft Group Policy can use the Diskeeper.adm administrative template file available from Diskeeper Corporation to control many aspects of Diskeeper operation through Group Policy. The Diskeeper.adm template file is packaged with Diskeeper software. It is located in the Diskeeper software installation directory.

Active Directory Users and Computers and the Group Policy Editor are the desktop tools used to administer Group Policy on your network. When the Diskeeper template is installed, these tools will allow you to configure Diskeeper options such as scheduling, defragmentation methods and defragmentation priority.

**Note:** This section assumes you have a certain level of experience using the Group Policy Editor. Refer to the Microsoft Group Policy documentation for complete information about using the Group Policy Editor.

1. To open Active Directory Users and Computers, click **Start**, point to **Programs**, point to **Administrative Tools**, and then click **Active Directory Users and Computers**.



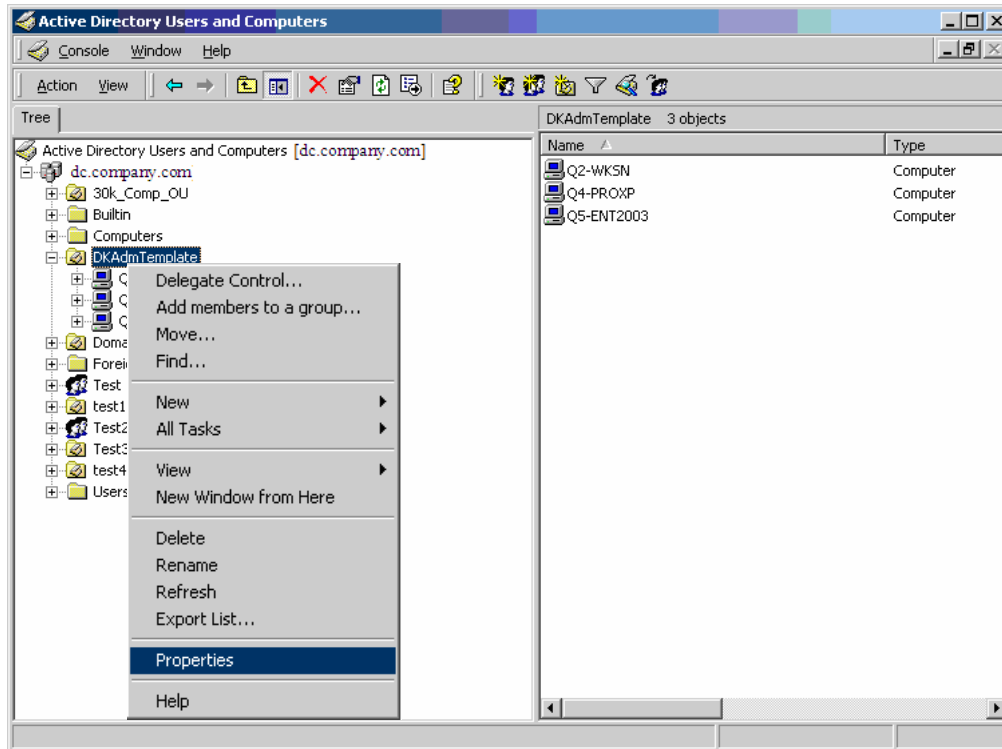
- o Note: Active Directory applies only in a network where Group Policy has been configured. You must be a domain Administrator, or have equivalent rights, and

<sup>1</sup> Active Directory is a Microsoft hierarchical directory service available with Windows 2000/2003.

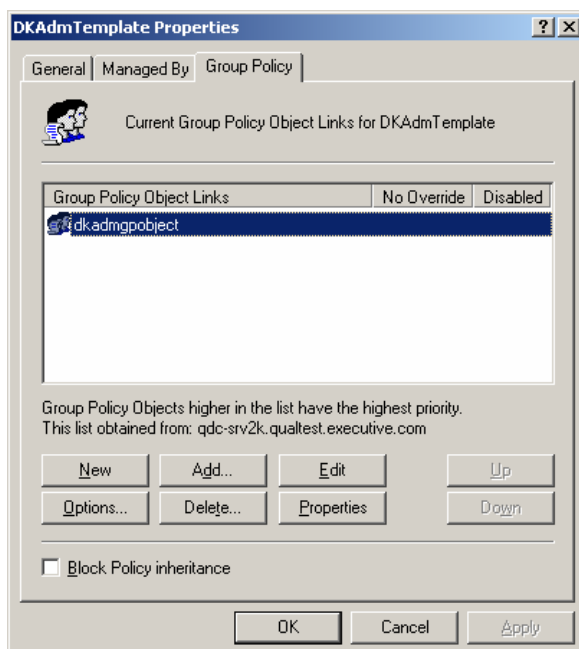
<sup>2</sup> Group Policy supports defining user and computer configurations, and is in turn associated with selected Active Directory objects, such as sites, domains, or organizational units (OUs).

use a computer configured as a domain controller to configure Group Policy for a domain.

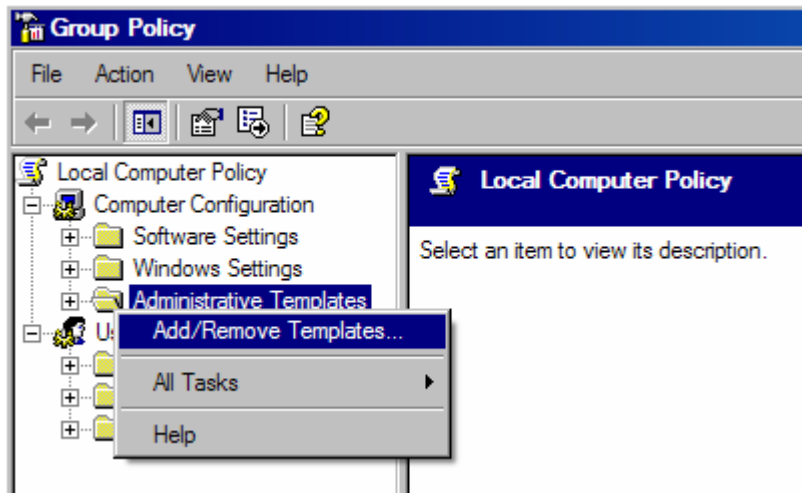
2. In the console tree, right-click the organizational unit for which you want to configure policy, and then click **Properties**.



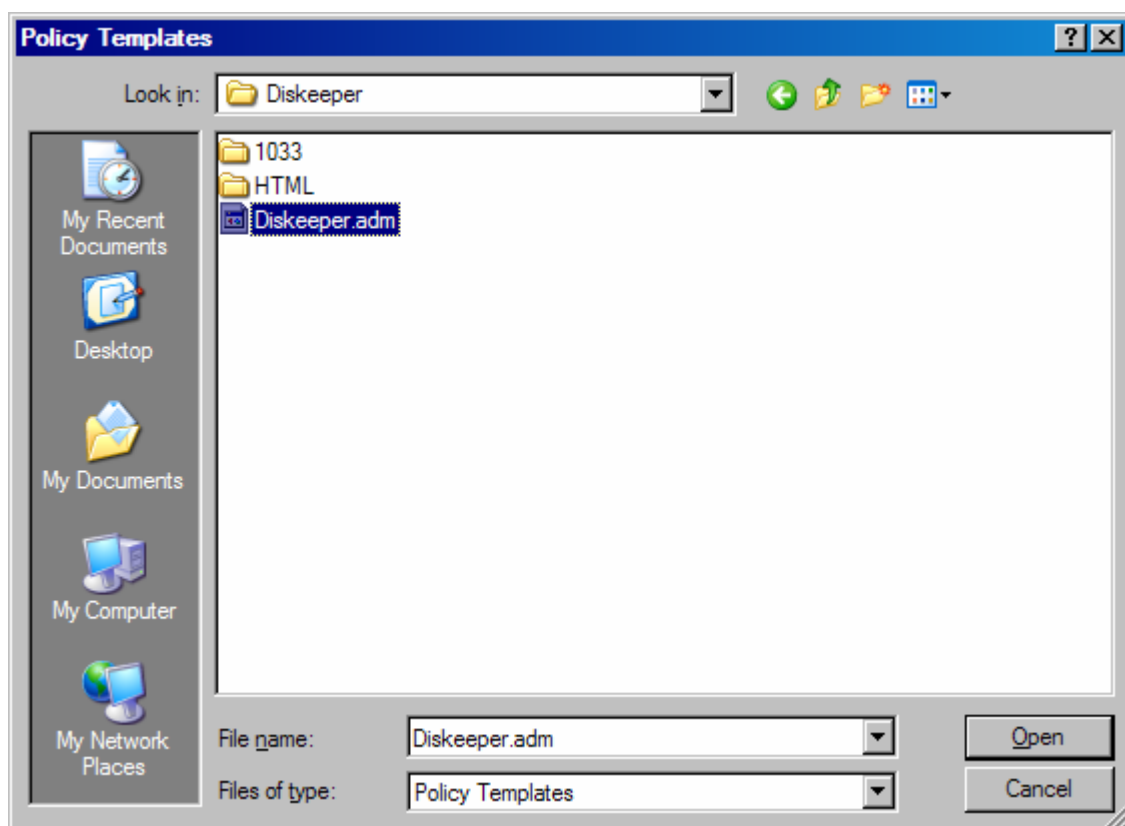
3. Create a **New** Group Policy Object and give it a name (shown here as *dkadmobject*). Make sure this Object is highlighted and select **Edit**. This will open the Group Policy Editor for your site, domain, or organizational unit.



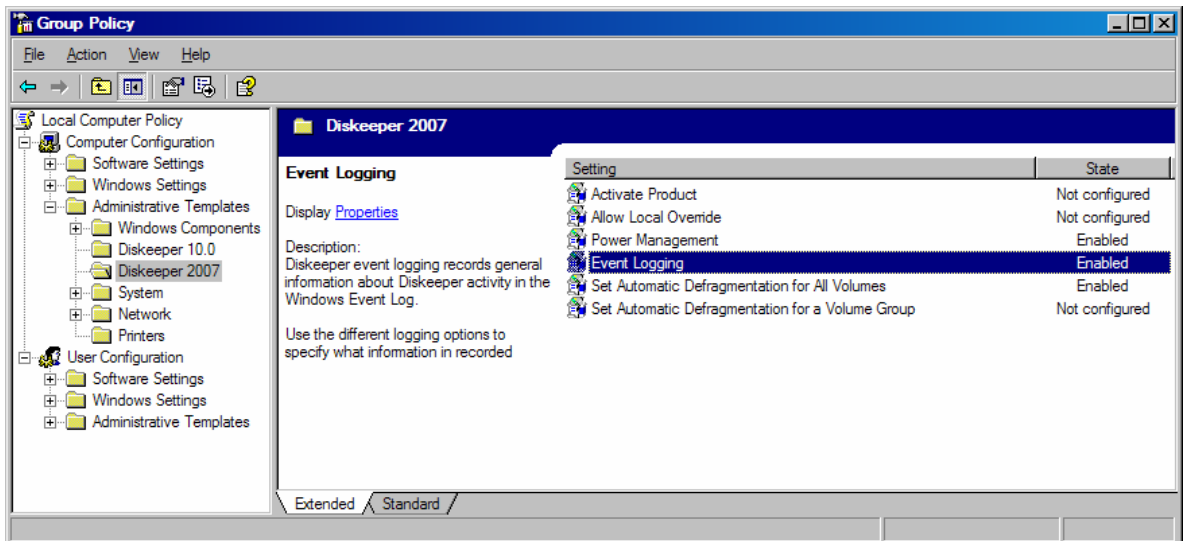
4. Right-click **Administrative Templates** in the tree view, and then select **Add/Remove Templates**.



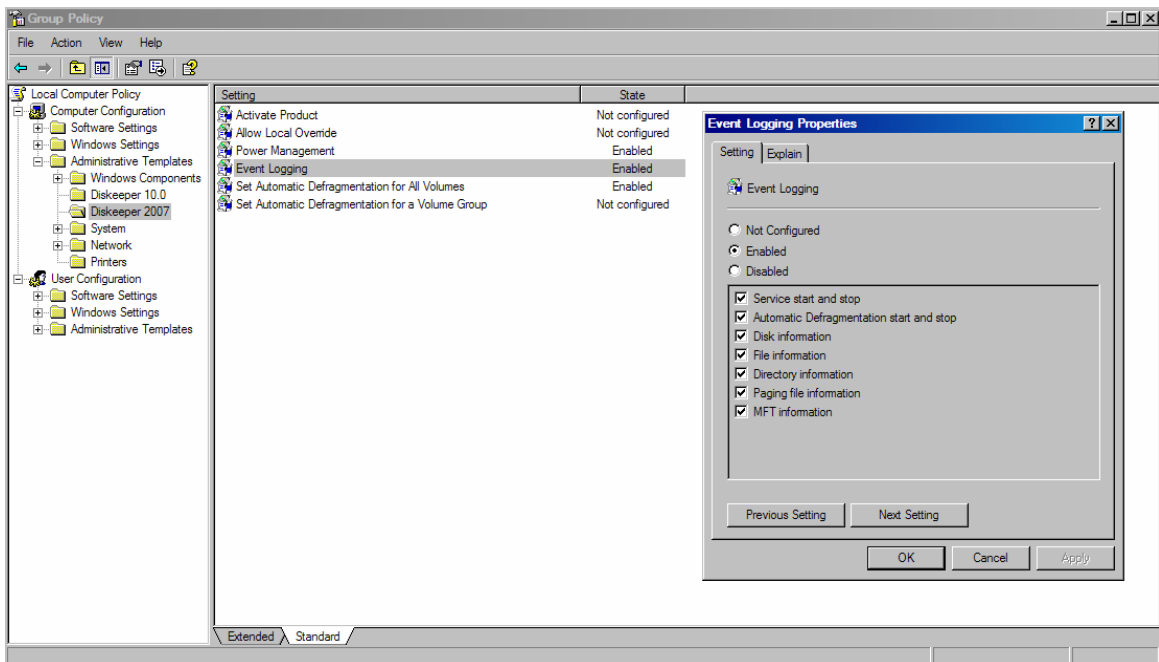
5. Navigate to (file is located in the Diskeeper software installation folder) and select the **Diskeeper.adm** file in the File Open window, then click **Open** in the Policy Templates dialog box.



6. After the Diskeeper.adm template has been added, you will see a new entry for Diskeeper in the Administrative Templates section of the Computer Configuration group.



7. Double click on any of the various Diskeeper settings available. Each will have a separate properties dialog in which to configure your settings. Click OK to implement your settings.



8. On confirming a setting change, the setting is immediately *active* and will propagate to clients within the Organizational Unit.

The following options are available for Diskeeper within the Group Policy Editor:

### **Activate Product**

This policy supports automated and silent forced software activation for Diskeeper client systems. Application of this option is only necessary when software activation is required.

### **Allow Local Override**

This policy makes it possible for the administrator at the local machine to have local settings override the Group Policy settings. *Disable* this feature to ensure Group Policy settings are enforced over local settings.

### **Power Management**

This option is intended primarily for laptop and portable computers. And will postpone any scheduled defragmentation jobs if/when the computer is running on battery power

### **Event Logging**

This policy provides event logging options for various Diskeeper events to the system application event log. Event-based actions are logged as they occur, summary report options are logged once per day.

### **Set Automatic Defragmentation for All Volumes**

This policy provides options to disable the performance benefits of Automatic defragmentation for a given day or time for all volumes on a computer system.

### **Set Automatic Defragmentation for a Volume Group**

This policy provides options to disable the performance benefits of Automatic defragmentation for a given day or time for a user-selected group of volumes on a computer system.

