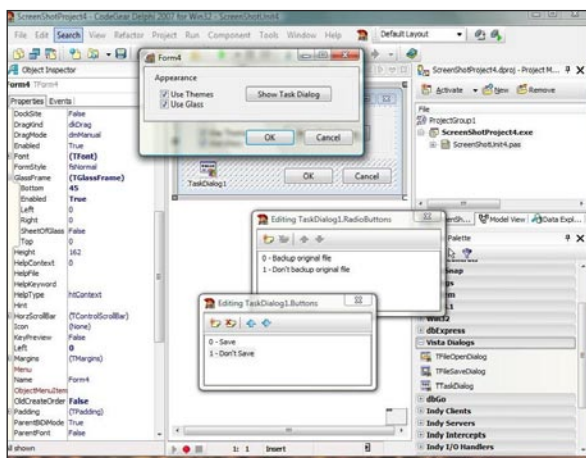
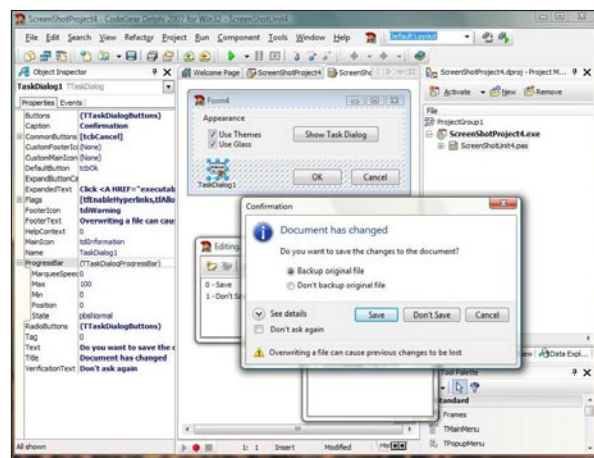


Delphi[®] 2007 for Win32[®] revitalizes Win32 development by combining Delphi's proven visual Rapid Application Development (RAD) approach for accelerated Win32 development with support for Windows Vista[™] and AJAX. Delphi for Win32 is the only IDE that supports creating native code applications on Windows 2000, XP or Vista and deploying on Windows 2000, XP, and Vista. Delphi for Win32 enables development of Vista supported applications from the familiar Win32 environment, easy creation of web applications that support AJAX, and streamlined enterprise database connectivity.

Delphi for Win32 Vista support includes themed applications and VCL support for glassing, file dialogs, and Task Dialog components. VCL for the Web lets you quickly and visually build interactive and responsive web applications that support AJAX techniques. VCL for the Web embeds the low level technologies in visual objects so you don't need to know HTML, JavaScript, CSS, or HTTP and can focus directly on code and user interface. New DBX4 database architecture streamlines enterprise database connectivity and adds support for the most recent versions of SQL databases. DBX4 is a single compatible native and managed code database infrastructure that simplifies the writing of data drivers and supports connection pooling.



Delphi for Win32 allows you to develop and deploy native code applications compatible with Windows 2000, XP, and Vista.



Windows Vista support includes themed applications and VCL support for glassing, file dialogs, and Task Dialog components.

What's New in Delphi 2007 for Win32

Windows[®] Vista[™] Support: Create native code applications on Windows 2000, XP or Vista and deploy on Windows 2000, XP and Vista.

AJAX Support: VCL for the Web lets you quickly and visually build interactive and responsive web applications that support AJAX techniques.

DBX4 Database Architecture: New DBX4 database architecture streamlines enterprise database connectivity and adds support for the most recent versions of SQL databases including Oracle[®] 10g, MS SQL Server 2000/2005, Informix 9x, IBM DB2 8.x, and Sybase[®] 12.5.

Build Management with MSBuild: Simplify management of even the most complex projects with MSBuild's powerful project build/make support.

Improved Install Technology: Now "on-the-fly" updates, Hotfixes, and feature additions are supported, so any incremental changes to the product are faster and easier to install.

Enhanced Together[®] Modeling: Includes additional modeling diagrams and charts including sequence diagrams, collaboration diagrams, state charts, deployment diagrams, use case diagrams, activity diagrams, and component diagrams.

Delphi® for Win32®

The RAD visual development environment for Windows®

SDKS	PRO	ENT
Microsoft Win 32 SDK with support for Windows Vista including themed applications, glassing, file dialogs, and Task Dialog components	■	■
VCL		
VCL for the Web — complete RAD Web application and Web page development with AJAX support		■
VCL for the Web — Web page development with AJAX support	■	■
DATABASE DEVELOPMENT AND ACCESS		
DBX4 database architecture to streamline connectivity, simplify the writing of data drivers and supports connection pooling	■	■
Database drivers for Interbase 2007, MySQL 4.1 and 5.0, and SQLAnywhere 9	■	■
Database drivers for Oracle 10g, DB2 8.x, MS SQL Server 2000/2005, Informix 9x, and Sybase 12.5		■
PROJECT MANAGEMENT		
Powerful build system using MS Build including support for pre and post-build events and named build configurations	■	■
TOGETHER® MODELING		
Together modeling program with full two-way LiveSource™ class diagrams, OCL 2.0 support, “UML in Color” profile, Diagram hyperlinking and annotations, and Diagram printing	■	■
Expanded Together modeling diagrams and charts including Sequence diagrams, Collaboration diagrams, State Charts, Deployment diagrams, Use Case diagrams, Activity diagrams, and Component diagrams		■
Additional Together modeling features including Design Patterns support, XMI 1.1 Import/Export, Documentation generation, and Audits and metrics		■
DEVELOPER SUPPORT		
Updated TeeChart Version 7 – library of charting and plotting components and controls	■	■
Updated Indy Version 10 - an open source internet component suite comprised of popular internet protocols written in Delphi and based on blocking sockets	■	■
Rave Reports Update – a powerful and flexible suite of visual reporting components and classes	■	■

System Requirements:

512 MB RAM (1 GB+ recommended)
 1.5 GB free hard disk space for Delphi for Win32® and Delphi for .NET personalities*
 750 MB free hard disk space for prerequisites (including Microsoft® .NET Framework and SDK)
 DVD-ROM drive
 XGA or higher-resolution monitor
 Mouse or other pointing device

Processor:

Intel® Pentium® III/M 1.4 GHz, or Pentium IV 1.4 GHz minimum (Intel Pentium III/M 1.4 GHz+, or Pentium IV 2GHz+ recommended)

* Does not include space required for optional 3rd party products.

Windows:

Microsoft® Windows Vista™
 Microsoft® Windows Server® 2003 (SP1)
 Microsoft® Windows XP Professional (SP2)
 Windows® 2000 Professional (SP4)
 Windows® 2000 Server (SP4)

Deployment (Minimum):

Intel Pentium II/300 MHz or better
 Microsoft® Windows Vista™
 Microsoft® Windows Server™ 2003 (SP1)
 Microsoft® Windows, XP Professional (SP2)
 Windows® 2000 Professional (SP4)
 Windows® 2000 Server (SP4)